

CardAccess® 3000



Full-featured enterprise class access control software

A scalable solution from stand-alone entry level through networked world-class enterprise systems

The CardAccess® 3000 Software (CA3000) is a full-featured Access Control software package that has been designed to take advantage of cutting edge technologies to provide Access Control solutions from stand-alone entry level through networked world-class enterprise systems. The scalable architecture and flexibility of the CA3000 software provides you with a system that utilizes secure MSDE/MSSQL technology and open database information sharing with CA ExchangeDB Import and Export features. This robust enterprise software provides an easy to use and easy to implement solution for any size facility.

The interoperability of the CardAccess 3000 software provides all the functions needed in today's ever more stringent security environment. The software provides a seamless integrated interface for access control, alarm monitoring, DVR/NVR interface, visitor management control, time and attendance/payroll functions, photo badging, import/export utilities, email/SMS notification, NAPCO Gemini alarm panel interface, and open API support.

Continental **Access** 

A Napco Security Group Company

CardAccess 3000 Access Control –

Complete facilities and security management



Access control – Continental's hardware is known worldwide for its reliability and flexibility with a proven track record of over 40 years of service. CardAccess 3000 software provides the integration necessary to bring all of your security subsystems together into one easy to use graphical interface.

CA DVR – DVR/NVR Interface

CA3000 software provides a direct interface with individual analog and digital cameras and also interfaces with nearly unlimited numbers of analog, digital and IP cameras and DVRs/NVRs from multiple DVR and NVR suppliers. Features include: Triggering of pre and post recording, viewing of live and recorded video associated with an event, indication of recording on CA3000 event screen, one click viewing of recorded video from the CA3000 event screen and displaying motion triggered recording as an alarm event on the event screen.



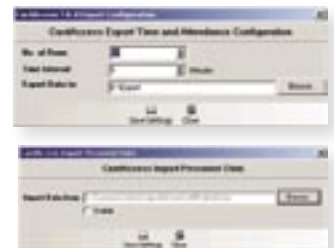
CA Visit – Visitor Management Control

Interface that provides the ability to scan a person's driver license, passport and business card and automatically enroll the person into CardAccess 3000, print their badge, and provide precise visitor access privileges to specified areas.



CA Timekeeper – Time and Attendance/Payroll Functions

Track and report In and Out card reads for specific cardholders or groups of cardholders. Establish work rules, adjust payroll hours (administrators), create reports and export to payroll processing companies.



CA Mail – Email and SMS Notification

Users can setup priority alarms to be routed to an email or SMS service. This feature can be activated with a time schedule so you are only notified when you are away from the system.

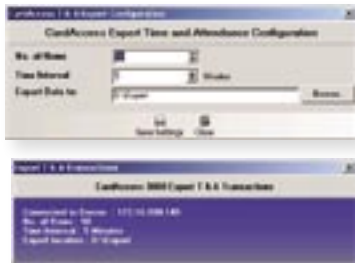
CA Badging3000 – Photo Badging

Enables users to easily capture employee images, add custom text and images, create custom card layouts and print ID cards or credentials with magnetic stripes, barcodes, smart chips and/or holographic images. Supports most common image capture devices. And, badge template designer features advanced WYSIWIG virtual badge viewer.



CA ExchangeDB – Import / Export Utilities

Provides data exchange of badge and personnel data, export of time and attendance data, import-export of photos for an open exchange between ERP (Human Resources and Corp IT management) and other database systems, which support import/export (e.g. Oracle).



CA Threat Level Management

Five states of threat level management, enables managers to more quickly react to present threats, by instantly deactivating access privileges, by badge, or by whole badgeholder groups, literally with a mouse click: Fourteen assignable threat level groups; color-coded levels; each group independently controlled; batch enrollment of all badgeholders.

NAPCO Gemini Alarm Panel Interface (Gemini P3200, P9600& X255)

Provides an interface between access control, alarm and video systems. The addition of the optional Napco Gemini interface will allow user-specified Gemini alarm events to be displayed on the CA3000 alert/event grids. It also allows alarm areas to be disarmed/armed by a CA3000 operator or by a card reader. An alarm event can trigger automatic locking/unlocking of doors and trigger presentation of live video and pre and post video recording. Also, if the system is armed, only personnel authorized to disarm the Gemini alarm system will be granted access.



CA InterAccess - Open API Support

Provides third party custom application integration allowing for infinite possibilities, as relates to current or future system functionality with CardAccess. (An API is a set of routines, protocols, and tools for integrating external software applications.)

Advantages and Benefits

- Vehicle tracking
- Flexible reporting capability including muster report
- Elevator control
- Foreign language support (including right to left support)
- Easy upgrade path for Sensormatic AC500 systems
- Graphical floorplan maps
- Unlimited system operators
- Advanced scripting service
- Custom alert sounds

Server and Database

- Server OS: Windows 2000/XPPro 2003
- Database: Microsoft SQL Server & MSDE
- Redundant server support
- Additional communication server support
- TCP/IP communication to controllers

Specifications:

Access Control

- Unlimited cardholder database (SQL)
- Database partitioning
- Over 210,000 cardholders per panel
- Transaction storage limited only to hard drive size
- 30,000 access groups
- 5 Holiday Calendars with 100 holidays each over 12,000 readers per location
- Over 112,000 relay outputs per location

Alarm Monitoring

- Over 124,000 supervised alarm inputs per location
- Photo recall and/or video pop up on alarm
- Custom sound files per alert
- Color coding of priority events
- Single acknowledge or acknowledge all capability

Reader Technology Support

- Biometric
- Smart Card
- Proximity
- Wiegand
- X-Y matrix keypad
- Barcode
- Magnetic stripe

The configuration used for the 'per location' capacities include CA3000 SQL software, Turbo Superterm panels and two secondary Com servers.



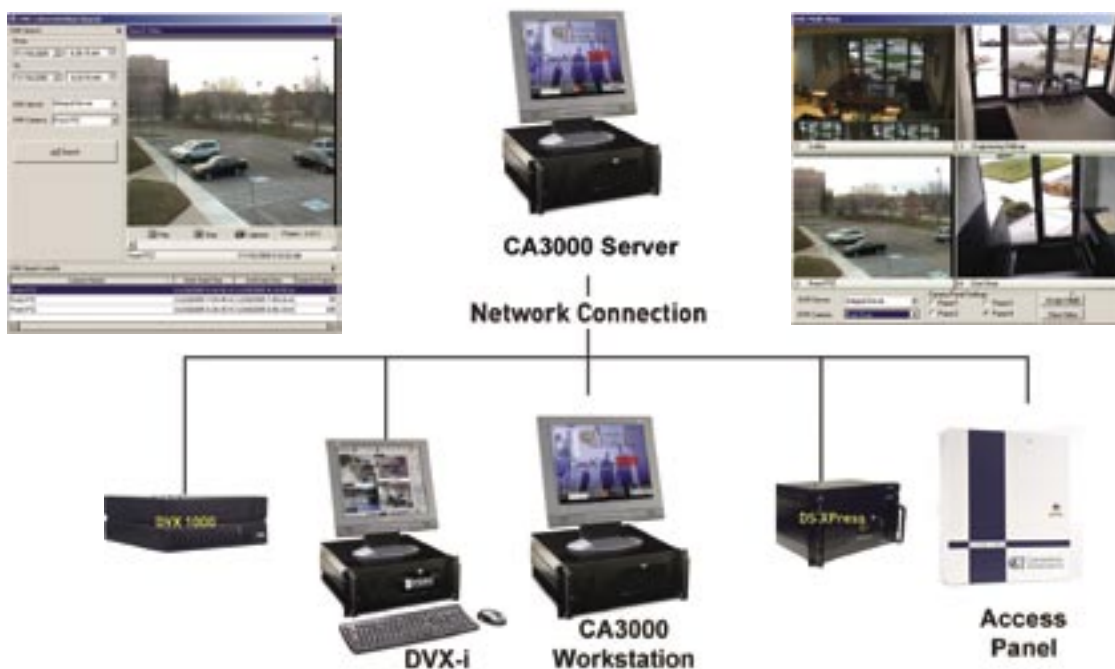
Continental Access controller features –

A reputation for quality, reliability and low maintenance costs

Feature:	Controller:				
	Microterm	Super Two	Superterm 4	Superterm 8	Turbo Superterm 8
Door capacity	1-2	2	4	8	8
Card capacity	1,400	20,000-125,000	20,000-210,000	20,000-210,000	20,000-210,000
Onboard outputs	3	5	9	17	17
Onboard supervised* inputs	2	8	16	24	24
Max. expanded outputs		48	57	65	65
Max. expanded* inputs		48	57	57	72
High speed communications		●			●
High speed transaction capability					●
Field-upgradeable firmware		●	●	●	●
Onboard lightning/surge protection	●	●	●	●	●
Power supply included	●	●	●	●	●

DVR Integration

Complete Access Control & Digital Video Solution



CardAccess 3000 server and workstation configuration – Flexible, scalable architecture for every application and project

Server Configuration:

	Server (1-5 Workstations)*	Server (6-20 Workstations)*	Server (21-50 Workstations)*
Processor	Pentium 4 2.8Ghz or higher	Intel Xenon 3.20Ghz (Dual Recommended)	Dual Intel Xenon 3.60Ghz
Ram	512MB	1.5 GB DDR2 SDRAM	2GB (4GB recommended)
Hard Drive	80 GB (SCSI recommended)	160GB Serial ATA or SCSI	Raid 5 - 3 drives minimum
USB Ports	2	2	2
Serial Ports	1 expandable to 64	1 expandable to 128	1 expandable to 128
Parallel Ports	1	1	1
Mouse	2 button PS2	2 button PS2	2 button PS2
Monitor	17" SVGA (1024x768)	17" flat panel	17" flat panel
CD/DVDROM	48x/16x	48x/16x	48x/16x
CDRW/DVDR	24x/8x	24x/8x	24x/8x
Sound	Req. for custom event sound	Req. for custom event sound	Req. for custom event sound
Network Card	100 Mb NIC Ethernet	10/100/1000 Mb NIC Ethernet	10/100/1000 Mb NIC Ethernet
Operating System	Microsoft Windows 2000 Professional, Server or Advanced Server w/SP4; Win XP Pro w/SP2, or Win 2003	Microsoft Windows 2000 Professional, Server or Advanced Server w/SP4; Win XP Pro w/SP2, or Win 2003	Microsoft Windows 2000 Professional, Server or Advanced Server w/SP4; Win XP Pro w/SP2, or Win 2003
Database	MSDE Standard or MSSQL Server 2000 for higher Performance	MS SQL Server 2000 Recommended	MS SQL Server 2000 Required

* For system requiring more than 1 Com Server, that include more than 256 panels or exceed 50 workstations, please consult your local sales representative or Continental Customer Service.

Note: Hard drive size dependent on database size and number of transactions in archive database.

Recommendation: Ideally, all optional software including, but not limited to, CA-Badging3000, CA-DVR, CA-Visit, CA-Napco & CA-Script should be run on a workstation.

Workstation Configuration:

	Workstation-Event Viewing Only	Workstation-Event Viewing+Badging	Workstation-Event Viewing +DVR and/or Napco/Scripting
Processor	Pentium 4 2.40Ghz	Pentium 4 2.80Ghz	Pentium 4 2.80Ghz
Ram	256 MB	512 MB	1GB
Hard Drive	40Gb	80Gb	80Gb
USB Ports	1	2	2
Serial Ports	N/A	N/A	N/A
Parallel Ports	1	1	1
Mouse	2 button PS2	2 button PS2	2 button PS2
Monitor	17" flat panel	17" flat panel	17" flat panel
CD/DVDROM	48x/16x	48x/16x	48x/16x
CDRW/DVDR	24x/4x Optional	24x/4x Optional	24x/4x Optional
Sound	Req. for custom event sound	Req. for custom event sound	Req. for custom event sound
Network Card	100 NIC Ethernet	100 NIC Ethernet	100 NIC Ethernet
Supported Operating Systems	Microsoft Windows 2000 Professional or Server w/SP4, Win XP Pro w/SP2, or Win 2003	Microsoft Windows 2000 Professional or Server w/SP4, Win XP Pro w/SP2, or Win 2003	Microsoft Windows 2000 Professional or Server w/SP4, Win XP Pro w/SP2, or Win 2003

CardAccess 3000 Windows-based software

CA3VrNuK	CA3000 Software where: Vr = version (23 = v2.3; 25=v2.5; 26=v2.6...) Nu = # of users (01=1 user; 05=5 users; 10=10 users; ...) K = security key type (S = software key and U = USB hardware key)
Common Configurations:	
CA32301U	CA3000 v2.3 Single User Software. Includes CardAccess 3000 file server software and MSDE Database with a USB security key.
CA32505S	CA3000 v2.5 Software, supporting up to 5 Users. Includes CardAccess 3000 file server software and MSDE Database (MS SQL 2000 recommended for larger databases and higher performance) with a software security key.
CA32510S	CA3000 v2.5 Software, supporting up to 10 Users. Includes CardAccess 3000 file server software (MS SQL 2000 required - not included with CA3000) with a software security key.
CA32525S	CA3000 v2.5 Software, supporting up to 25 Users. Includes CardAccess 3000 file server software (MS SQL 2000 required - not included with CA3000) with a software security key.

** Contact Sales Rep for 25-150 Workstation Quotes**

For additional software options see next column

CA3000 Servers and Workstations

CICA3SERVPC	Card Access 3000 server, PC only - includes 17" SVGA monitor, keyboard and mouse.
Note: All software configurations are available, pre-loaded on CA3000 recommended hardware. Contact Continental for more information.	
CICA3WSPC	Card Access 3000 workstations, PC only - includes 17" SVGA monitor, keyboard and mouse.

Continental reserves the right to change or discontinue part numbers at any time.

Additional CA3000 software options

CA3VrNuK (as above, plus) DvCAITv	where: Dv = # and type of CA DVR/NVR servers (00=none; 11 =1 Integral; 12 = 2 Integral; 21=1 Salient; 25 = 5 Salient...) C = # of CA Secondary Communication (Remote Com) Servers (0,1 or 2) A = # of CA Napco Alarm Integration Servers (0, 1, 2, 3, ... , 9) I = CA InterAccess API Interface (0 = no, 1=yes) Tv = CA Time Keeper & CA Visit Components (0 = none, 1=CA Time Keeper, 2= CA Visit, 3 = both)
--	---

Notes:

- When ordering any additional software options, all six software option digits must be specified. If ordering the base software only, none of the option digits need to be specified.
- Field upgrade of software features is supported by use of the software key. Contact Continental for more information.
- Not all optional software features are available in all software versions. Contact Continental for more information.

Common Configurations:

CA32501U110000	1 user (USB key) CA3000 v2.5 base software with 1 Integral DVR/NVR Server.
CA32505S002000	5 user (Software key) CA3000 v2.5 base software with 2 Secondary Com Servers.
CA32510S000510	10 user (Software key) CA3000 v2.5 base software with 5 Napco Alarm Integration Servers and the CA InterAccess API.
CA32625S250001	25 user (Software key) CA3000 v2.6 base software with 5 Salient DVR/NVR Servers and CA TimeKeeper component.
CA32605S000002	5 user (Software key) CA3000 v2.6 base software with CA Visit component.
CA32510S172413	10 user (Software key) CA3000 v2.5 base software with 7 Integral DVR/NVR Servers, 2 Secondary Com Servers, 4 Napco Alarm Integration Servers, the CA InterAccess API, CA TimeKeeper, and CA Visit.
EPISOFT	CA3000 Badging software key.

Note

The CA3000 badging software is optionally loaded on any software installation, but requires an additional software key for activation. Continental reserves the right to change or discontinue part numbers at any time.

For more information, please contact your local sales representative or contact Continental Access directly at (631) 842-9400



Continental Instruments, A Napco Security Group Company • 355 Bayview Ave., Amityville, NY 11701
Phone (631) 842-9400 • Fax (631) 842-9135 • www.cicaccess.com • GSA GS-07F-00039H

CardAccess® and CI SQL 3000™ are trademarks of Continental/NAPCO, 2006 A460A

Specifications subject to change without prior notice.